

Southport and Formby Clinical Commissioning Group
Southport and Ormskirk Hospital NHS Trust
West Lancashire Clinical Commissioning Group



Shaping Care Together



Welcome to Shaping Care Together



- Healthcare professionals across Southport, Formby and West Lancashire are coming together to shape how hospital services could be delivered in the future to ensure local people receive safe, sustainable and high-quality care.
- Shaping Care Together aims to shape, develop and improve future services for everyone, based on feedback from the patients, carers and staff who use and deliver those services.
- Shaping Care Together is a partnership of NHS organisations - Southport and Ormskirk Hospital NHS Trust, NHS Southport and Formby CCG and NHS West Lancashire CCG.

Our vision

This care will be integrated with other services to make sure that when patients go home they are supported by the services they need as quickly and safely as possible.

To make sure that people only access the most appropriate services when they need to and that services are accessible and effective with skilled staff available to meet their needs.

Why is Shaping Care Together important?

We need to redefine how we provide hospital services, help people use them only when they need them, and ensure those services are safe, sustainable and high quality. We need to consider Out of Hospital NHS services eg General Practice and Community based services

We are working together to look at the challenges faced in light of:



COVID-19
pandemic

Growing
demand for
NHS services
in and out of
hospital
services

Issues with
workforce
recruitment
and retention

Financial
pressures

Our demographics

- The demographic makeup of our population shows a higher proportion of residents 65 years and over, approximately 26%, compared with a national rate of closer to 18%. Projections over the next 10 years indicate this age group will increase by close to 20%.
- Whilst our residents aged 85 years and over is our smallest age group, the growth over the next 10 years is projected to exceed 18%.
- Our residents live in economically diverse communities, with areas of affluence and pockets of deprivation.
- The areas of highest income deprivation affecting older people are mainly concentrated in central Southport.
- A growing population of older people with more living with multiple long-term conditions such as breathing difficulties and dementia.



Challenges we face

- Hospitals, GPs and other providers of health and social care cannot currently recruit the number of skilled staff we need to deliver those services to meet the needs of the population.
- Although health is improving in a number of areas there remains unacceptable inequalities in health in different parts of the borough and these present clear areas for improvement.
- Although life expectancy overall is close to the national levels unacceptable variation still exists within the least affluent areas.
- Levels of long term health conditions are much higher than the national average especially cardiovascular related diseases. Other factors such as obesity, respiratory diseases and mental health disorders are higher in Sefton than nationally along with dementia.

Areas of focus

Shaping Care Together will explore how health and care services are accessible, effective and operated by skilled staff to meet everyone's needs. We have identified these areas of focus:



Frail and elderly care



When you have an urgent or emergency care need



Services for children including those who have complex needs



Services for women who are pregnant and the newborn



Gynaecology – dealing with women's reproductive system



Sexual health services for all genders

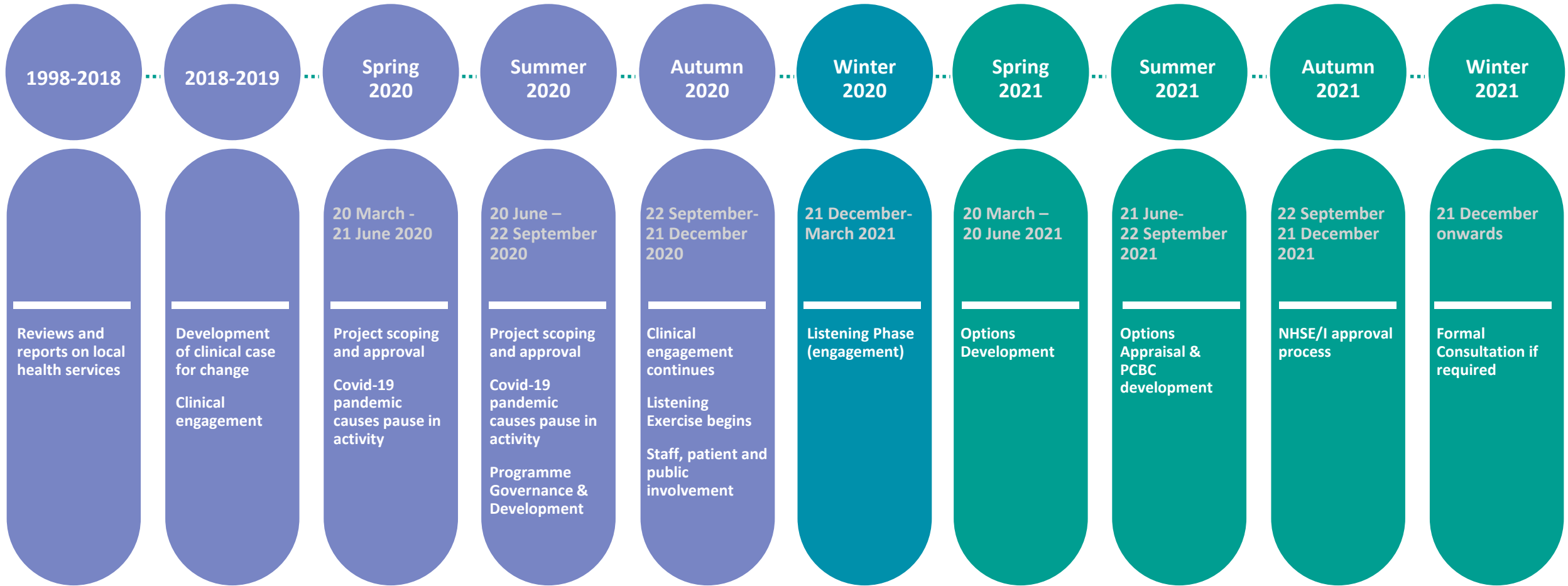


Planned care, such as follow-up outpatient and/or subsequent admissions as part of ongoing treatment

Our journey



We Are Here

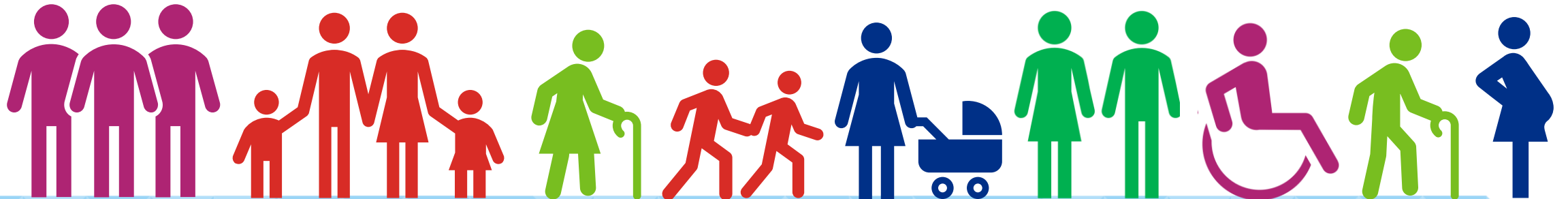


Listening to our stakeholders

This programme will last throughout 2021 and there will be many opportunities for local people to have their say. No decisions have been made and we are seeking views which will inform our thinking and proposals for change.

We will be asking patients, carers, members of the public and health and care staff:

- What works well?
- What needs to be improved?
- What is important to them?



Get involved

Visit our interactive **engagement site** to upload stories, share ideas, join forums and complete our survey:

www.yoursayshapingcaretogether.co.uk

Call **01695 588025** to receive printed information or if you require information in other accessible formats

Attend a virtual **workshop** or **discussion** group

Follow us at **#shapingcaretogether** and join in the conversation



Stories make a difference!
Tell us how you feel about local health and care.
#shapingcaretogether
#health
#getinvolved



We are listening!
Tell us what matters to you and your health and care in Southport and Ormskirk.
#shapingcaretogether
#getinvolved

